

1) Status of the notification

Final

2) Issuer

Name: PROXIMUS  
Identification number: 0202-239-951

3) Reason for the notification

Acquisition or disposal of voting securities or voting rights

4) Notification by

A parent undertaking or a controlling person

5) Persons subject to the notification requirement

Name	Address (for legal entities)
The Goldman Sachs Group, Inc	Corporation Truse Center, 1209 Orange Street, Wilmington, DE 19801, USA

6) Persons that dispose of voting rights (only to be filled in if art. 7 of the Law applies)

Name	Address (for legal entities)

Please continue entering the information in **part II** concerning the persons referred to in Sections 5 and 6

Part II

7) Date on which the threshold is crossed

02/06/2025 (DD/MM/YYYY)

8) Threshold that is crossed (in %)

7.5

If the holding has fallen below the lowest threshold, you have the option of not entering any numbers in Section 10

9) Denominator

338,025,135


Please enter the denominator before filling in the data

10) Notified details

A) Voting rights	Previous notification	After the transaction			
	# of voting rights	# of voting rights		% of voting rights	
Holders of voting rights		Linked to securities	Not linked to the securities	Linked to securities	Not linked to the securities
The Goldman Sachs Group, Inc.	0	0		0.00%	
Goldman Sachs & Co. LLC	14	3,878,285		1.15%	
Goldman Sachs Asset Management B.V.	1,856,764	2,356,491		0.70%	
Goldman Sachs International		1,876,027		0.55%	

Goldman Sachs Asset Management, L.P.	114,367	40,451		0.01%	
Goldman Sachs Asset Management International	2,226	2,085		0.00%	
Goldman Sachs Bank Europe SE	5,110	0		0.00%	
Subtotal	1,978,481	8,153,339		2.41%	
<b>TOTAL</b>		<b>8,153,339</b>	<b>0</b>	<b>2.41%</b>	<b>0.00%</b>

-
-
-
+

 Start with "groups" of holders. Add subtotals with  $\Sigma$ , and then finish with the persons who are "alone".  
 For groups, start with the ultimate controlling natural person or legal entity.  
 The totals, subtotals and % will be updated once you have clicked on **<CALCULATE>**.

B) Equivalent financial instruments	After the transaction						
	Holders of equivalent financial instruments	Type of financial instrument	Expiration date	Exercise period or date	# of voting rights that may be acquired if the instrument is exercised	% of voting rights	Settlement
Goldman Sachs International	Call/Put Option	13/07/2026		101,764	0.03%	physical	-
Goldman Sachs International	Call/Put Option	24/07/2026		101,764	0.03%	physical	-
Goldman Sachs International	Call/Put Option	27/07/2026		101,764	0.03%	physical	-
Goldman Sachs International	Call/Put Option	28/07/2026		101,764	0.03%	physical	-
Goldman Sachs International	Call/Put Option	29/07/2026		101,764	0.03%	physical	-
Goldman Sachs International	Call/Put Option	30/07/2026		101,764	0.03%	physical	-
Goldman Sachs International	Call/Put Option	31/07/2026		101,764	0.03%	physical	-
Goldman Sachs International	Call/Put Option	03/08/2026		101,764	0.03%	physical	-
Goldman Sachs International	Call/Put Option	04/08/2026		101,764	0.03%	physical	-
Goldman Sachs International	Call/Put Option	05/08/2026		101,764	0.03%	physical	-
Goldman Sachs International	Call/Put Option	06/08/2026		101,764	0.03%	physical	-
Goldman Sachs International	Call/Put Option	14/07/2026		101,764	0.03%	physical	-
Goldman Sachs International	Call/Put Option	07/08/2026		101,764	0.03%	physical	-
Goldman Sachs International	Call/Put Option	10/08/2026		101,764	0.03%	physical	-
Goldman Sachs International	Call/Put Option	11/08/2026		101,764	0.03%	physical	-
Goldman Sachs International	Call/Put Option	12/08/2026		101,764	0.03%	physical	-
Goldman Sachs International	Call/Put Option	13/08/2026		101,764	0.03%	physical	-
Goldman Sachs International	Call/Put Option	14/08/2026		101,764	0.03%	physical	-
Goldman Sachs International	Call/Put Option	17/08/2026		101,764	0.03%	physical	-
Goldman Sachs International	Call/Put Option	18/08/2026		101,764	0.03%	physical	-
Goldman Sachs International	Call/Put Option	19/08/2026		101,764	0.03%	physical	-
Goldman Sachs International	Call/Put Option	20/08/2026		101,764	0.03%	physical	-
Goldman Sachs International	Call/Put Option	15/07/2026		101,764	0.03%	physical	-
Goldman Sachs International	Call/Put Option	21/08/2026		101,764	0.03%	physical	-
Goldman Sachs International	Call/Put Option	24/08/2026		101,764	0.03%	physical	-
Goldman Sachs International	Call/Put Option	25/08/2026		101,764	0.03%	physical	-
Goldman Sachs International	Call/Put Option	26/08/2026		101,764	0.03%	physical	-
Goldman Sachs International	Call/Put Option	27/08/2026		101,764	0.03%	physical	-
Goldman Sachs International	Call/Put Option	28/08/2026		101,764	0.03%	physical	-
Goldman Sachs International	Call/Put Option	01/09/2026		101,764	0.03%	physical	-
Goldman Sachs International	Call/Put Option	02/09/2026		101,764	0.03%	physical	-
Goldman Sachs International	Call/Put Option	03/09/2026		101,764	0.03%	physical	-
Goldman Sachs International	Call/Put Option	04/09/2026		101,764	0.03%	physical	-
Goldman Sachs International	Call/Put Option	16/07/2026		101,764	0.03%	physical	-
Goldman Sachs International	Call/Put Option	07/09/2026		101,764	0.03%	physical	-
Goldman Sachs International	Call/Put Option	08/09/2026		101,764	0.03%	physical	-
Goldman Sachs International	Call/Put Option	09/09/2026		101,764	0.03%	physical	-
Goldman Sachs International	Call/Put Option	10/09/2026		101,764	0.03%	physical	-
Goldman Sachs International	Call/Put Option	11/09/2026		101,764	0.03%	physical	-
Goldman Sachs International	Call/Put Option	14/09/2026		101,764	0.03%	physical	-
Goldman Sachs International	Call/Put Option	15/09/2026		101,764	0.03%	physical	-
Goldman Sachs International	Call/Put Option	16/09/2026		101,764	0.03%	physical	-
Goldman Sachs International	Call/Put Option	17/09/2026		101,764	0.03%	physical	-







Goldman Sachs International	Swap	20/11/2034		66,193	0.02%	cash	-
Goldman Sachs International	Swap	20/12/2027		79,771	0.02%	cash	-
Goldman Sachs International	Swap	07/03/2029		56,497	0.02%	cash	-
Goldman Sachs International	Swap	03/04/2035		321,837	0.10%	cash	-
Goldman Sachs International	Swap	03/04/2035		30,930	0.01%	cash	-
Goldman Sachs International	Swap	03/04/2035		43,205	0.01%	cash	-
Goldman Sachs International	Swap	03/04/2035		34,895	0.01%	cash	-
Goldman Sachs International	Swap	15/01/2030		35,825	0.01%	cash	-
Goldman Sachs International	Swap	30/04/2035		98,689	0.03%	cash	-
Goldman Sachs International	Swap	08/08/2025		1,153	0.00%	cash	-
Goldman Sachs International	Swap	09/05/2028		253,738	0.08%	cash	-
Goldman Sachs International	Swap	26/05/2028		3,925	0.00%	cash	-
Goldman Sachs International	Swap	29/06/2026		3,110	0.00%	cash	-
Goldman Sachs International	Swap	28/05/2035		22,129	0.01%	cash	-
Goldman Sachs International	Swap	28/08/2025		18,504	0.01%	cash	-
Goldman Sachs Bank Europe SE	Swap	28/08/2025		34,057	0.01%	cash	-
Goldman Sachs Bank Europe SE	Swap	28/08/2025		1,951	0.00%	cash	-
Goldman Sachs Bank Europe SE	Swap	29/08/2025		28	0.00%	cash	-
Goldman Sachs International	Swap	01/09/2025		2,175	0.00%	cash	-
Goldman Sachs Bank Europe SE	Swap	02/09/2025		1,052	0.00%	cash	-
Goldman Sachs International	Securities Lending	Open		1,137,781	0.34%	cash	-
Goldman Sachs & Co. LLC	Securities Lending	Open		5,587	0.00%	cash	+
<b>TOTAL</b>				<b>19,765,121</b>	<b>5.85%</b>		

 **The totals** will be updated once you have clicked on <CALCULATE>

<b>TOTAL (A &amp; B)</b>	<b># of voting rights</b>	<b>% of voting rights</b>
	<b>CALCULATE</b>	<b>27,918,461</b>
		<b>8.26%</b>

11) Full chain of controlled undertakings through which the holding is effectively held, if applicable

Please refer to Annexure - Structured Chart

12) In case of proxy voting for only one GM

Holder  will cease to hold / will hold again  0 voting rights as of  (DD/MM/YYYY)

13) Additional information

With reference to the items mentioned in Section 10B:  
 - "Call/Put Option" mentioned in rows 67 to 236 – these are call/put options relating to the same shares and forming part of a single transaction. Goldman Sachs International has granted the put options and acquired the call options over 17,300,000 shares in Proximus SA.  
 - "Call Warrants" and "Swaps" mentioned in rows 237 to 276- these are held by the corresponding entities where Goldman Sachs has a long exposure

Done at

Warsaw

On

09/06/2025 (DD/MM/YYYY)

Name & capacity

Andrzej Szyszka, Executive Director

Signature

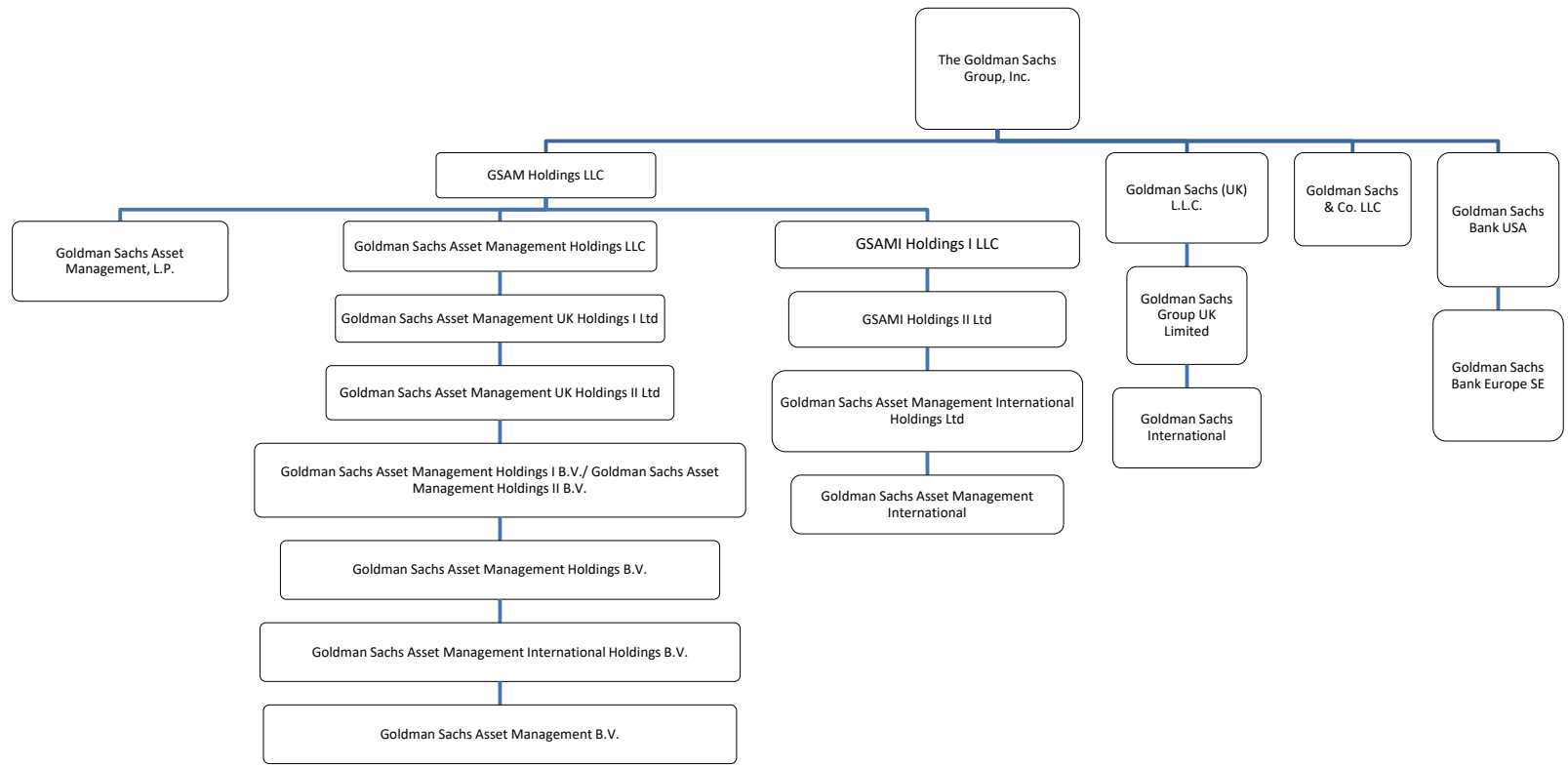


For security reasons, the unsigned form in [xlsx](#) format should be transmitted to [trp.fin@fsma.be](mailto:trp.fin@fsma.be). You can do this manually OR if you have MS Outlook at your disposal via the "Save & Send" button.

In addition, a signed copy in [PDF](#) format should also be transmitted.

Chain of Controlled Undertakings:

- GOLDMAN SACHS INTERNATIONAL IS CONTROLLED BY GOLDMAN SACHS GROUP UK LIMITED WHICH IS CONTROLLED BY GOLDMAN SACHS (UK) L.L.C. WHICH IS CONTROLLED BY THE GOLDMAN SACHS GROUP, INC.
- GOLDMAN SACHS ASSET MANAGEMENT, L.P. IS CONTROLLED BY GSAM HOLDINGS LLC WHICH IS CONTROLLED BY THE GOLDMAN SACHS GROUP, INC.
- GOLDMAN SACHS ASSET MANAGEMENT INTERNATIONAL IS CONTROLLED BY GOLDMAN SACHS ASSET MANAGEMENT INTERNATIONAL HOLDINGS LTD WHICH IS CONTROLLED BY GSAMI HOLDINGS II LTD. WHICH IS CONTROLLED BY GSAMI HOLDINGS I LLC WHICH IS CONTROLLED BY GSAM HOLDINGS LLC WHICH IS CONTROLLED BY THE GOLDMAN SACHS GROUP, INC.
- GOLDMAN SACHS BANK EUROPE SE IS CONTROLLED BY GOLDMAN SACHS BANK USA WHICH IS CONTROLLED BY THE GOLDMAN SACHS GROUP, INC.
- GOLDMAN SACHS ASSET MANAGEMENT B.V. IS CONTROLLED BY GOLDMAN SACHS ASSET MANAGEMENT INTERNATIONAL HOLDINGS B.V. WHICH IS CONTROLLED BY GOLDMAN SACHS ASSET MANAGEMENT HOLDINGS B.V. WHICH IS CONTROLLED BY GOLDMAN SACHS ASSET MANAGEMENT HOLDINGS I B.V. / GOLDMAN SACHS ASSET MANAGEMENT HOLDINGS II B.V. WHICH IS CONTROLLED BY GOLDMAN SACHS ASSET MANAGEMENT UK HOLDINGS II LTD WHICH IS CONTROLLED BY GOLDMAN SACHS ASSET MANAGEMENT UK HOLDINGS I LTD WHICH IS CONTROLLED BY GOLDMAN SACHS ASSET MANAGEMENT HOLDINGS LLC WHICH IS CONTROLLED BY GSAM HOLDINGS LLC WHICH IS CONTROLLED BY THE GOLDMAN SACHS GROUP, INC.



Note: The above structure chart reflecting the chain of controlled undertakings is based on voting rights only. For the purpose of aggregation and representation, only entities that have more than 50% of the voting shares are regarded as a controlled undertaking under the substantial shareholder disclosure rules. The structure chart comprises only GS entities which are part of the notification.