

1) Status of the notification

Final

2) Issuer

Name PROXIMUS
Identification number 0202-239-951

3) Reason for the notification

Acquisition or disposal of voting securities or voting rights

4) Notification by

A parent undertaking or a controlling person

5) Persons subject to the notification requirement

| Name | Address (for legal entities) |
|------------------------------|---|
| The Goldman Sachs Group, Inc | Corporation Truse Center, 1209 Orange Street, Wilmington, DE 19801, USA |

6) Persons that dispose of voting rights (only to be filled in if art. 7 of the Law applies)

| Name | Address (for legal entities) |
|------|------------------------------|
| | |

Please continue entering the information in **part II** concerning the persons referred to in Sections 5 and 6

Part II

7) Date on which the threshold is crossed

04/06/2025 (DD/MM/YYYY)

8) Threshold that is crossed (in %)

7.5

If the holding has fallen below the lowest threshold, you have the option of not entering any numbers in Section 10

9) Denominator

338,025,135


Please enter the denominator before filling in the data

10) Notified details

| A) Voting rights | Previous notification | After the transaction | | | |
|--|-----------------------|-----------------------|------------------------------|----------------------|------------------------------|
| | | # of voting rights | # of voting rights | | % of voting rights |
| Holders of voting rights | | Linked to securities | Not linked to the securities | Linked to securities | Not linked to the securities |
| The Goldman Sachs Group, Inc. | 0 | 0 | | 0.00% | |
| Goldman Sachs & Co. LLC | 3,878,285 | 0 | | | |
| Goldman Sachs Asset Management B.V. | 2,356,491 | 2,289,678 | | 0.68% | |
| Goldman Sachs International | 1,876,027 | 0 | | | |
| Goldman Sachs Asset Management, L.P. | 40,451 | 40,451 | | 0.01% | |
| Goldman Sachs Asset Management International | 2,085 | 2,085 | | 0.00% | |

| | | | | | |
|------------------------------|-----------|------------------|----------|--------------|--------------|
| Goldman Sachs Bank Europe SE | 0 | 4,067 | | 0.00% | |
| Subtotal | 8,153,339 | 2,336,281 | | 0.69% | |
| TOTAL | | 2,336,281 | 0 | 0.69% | 0.00% |




 Start with "groups" of holders. Add subtotals with Σ , and then finish with the persons who are "alone".
 For groups, start with the ultimate controlling natural person or legal entity.
 The totals, subtotals and % will be updated once you have clicked on **<CALCULATE>**.

| B) Equivalent financial instruments | | After the transaction | | | | | |
|---|------------------------------|-----------------------|-------------------------|--|--------------------|------------|---|
| Holders of equivalent financial instruments | Type of financial instrument | Expiration date | Exercise period or date | # of voting rights that may be acquired if the instrument is exercised | % of voting rights | Settlement | |
| Goldman Sachs International | Call/Put Option | 13/07/2026 | | 101,764 | 0.03% | physical | - |
| Goldman Sachs International | Call/Put Option | 24/07/2026 | | 101,764 | 0.03% | physical | - |
| Goldman Sachs International | Call/Put Option | 27/07/2026 | | 101,764 | 0.03% | physical | - |
| Goldman Sachs International | Call/Put Option | 28/07/2026 | | 101,764 | 0.03% | physical | - |
| Goldman Sachs International | Call/Put Option | 29/07/2026 | | 101,764 | 0.03% | physical | - |
| Goldman Sachs International | Call/Put Option | 30/07/2026 | | 101,764 | 0.03% | physical | - |
| Goldman Sachs International | Call/Put Option | 31/07/2026 | | 101,764 | 0.03% | physical | - |
| Goldman Sachs International | Call/Put Option | 03/08/2026 | | 101,764 | 0.03% | physical | - |
| Goldman Sachs International | Call/Put Option | 04/08/2026 | | 101,764 | 0.03% | physical | - |
| Goldman Sachs International | Call/Put Option | 05/08/2026 | | 101,764 | 0.03% | physical | - |
| Goldman Sachs International | Call/Put Option | 06/08/2026 | | 101,764 | 0.03% | physical | - |
| Goldman Sachs International | Call/Put Option | 14/07/2026 | | 101,764 | 0.03% | physical | - |
| Goldman Sachs International | Call/Put Option | 07/08/2026 | | 101,764 | 0.03% | physical | - |
| Goldman Sachs International | Call/Put Option | 10/08/2026 | | 101,764 | 0.03% | physical | - |
| Goldman Sachs International | Call/Put Option | 11/08/2026 | | 101,764 | 0.03% | physical | - |
| Goldman Sachs International | Call/Put Option | 12/08/2026 | | 101,764 | 0.03% | physical | - |
| Goldman Sachs International | Call/Put Option | 13/08/2026 | | 101,764 | 0.03% | physical | - |
| Goldman Sachs International | Call/Put Option | 14/08/2026 | | 101,764 | 0.03% | physical | - |
| Goldman Sachs International | Call/Put Option | 17/08/2026 | | 101,764 | 0.03% | physical | - |
| Goldman Sachs International | Call/Put Option | 18/08/2026 | | 101,764 | 0.03% | physical | - |
| Goldman Sachs International | Call/Put Option | 19/08/2026 | | 101,764 | 0.03% | physical | - |
| Goldman Sachs International | Call/Put Option | 20/08/2026 | | 101,764 | 0.03% | physical | - |
| Goldman Sachs International | Call/Put Option | 15/07/2026 | | 101,764 | 0.03% | physical | - |
| Goldman Sachs International | Call/Put Option | 21/08/2026 | | 101,764 | 0.03% | physical | - |
| Goldman Sachs International | Call/Put Option | 24/08/2026 | | 101,764 | 0.03% | physical | - |
| Goldman Sachs International | Call/Put Option | 25/08/2026 | | 101,764 | 0.03% | physical | - |
| Goldman Sachs International | Call/Put Option | 26/08/2026 | | 101,764 | 0.03% | physical | - |
| Goldman Sachs International | Call/Put Option | 27/08/2026 | | 101,764 | 0.03% | physical | - |
| Goldman Sachs International | Call/Put Option | 28/08/2026 | | 101,764 | 0.03% | physical | - |
| Goldman Sachs International | Call/Put Option | 01/09/2026 | | 101,764 | 0.03% | physical | - |
| Goldman Sachs International | Call/Put Option | 02/09/2026 | | 101,764 | 0.03% | physical | - |
| Goldman Sachs International | Call/Put Option | 03/09/2026 | | 101,764 | 0.03% | physical | - |
| Goldman Sachs International | Call/Put Option | 04/09/2026 | | 101,764 | 0.03% | physical | - |
| Goldman Sachs International | Call/Put Option | 16/07/2026 | | 101,764 | 0.03% | physical | - |
| Goldman Sachs International | Call/Put Option | 07/09/2026 | | 101,764 | 0.03% | physical | - |
| Goldman Sachs International | Call/Put Option | 08/09/2026 | | 101,764 | 0.03% | physical | - |
| Goldman Sachs International | Call/Put Option | 09/09/2026 | | 101,764 | 0.03% | physical | - |
| Goldman Sachs International | Call/Put Option | 10/09/2026 | | 101,764 | 0.03% | physical | - |
| Goldman Sachs International | Call/Put Option | 11/09/2026 | | 101,764 | 0.03% | physical | - |
| Goldman Sachs International | Call/Put Option | 14/09/2026 | | 101,764 | 0.03% | physical | - |
| Goldman Sachs International | Call/Put Option | 15/09/2026 | | 101,764 | 0.03% | physical | - |
| Goldman Sachs International | Call/Put Option | 16/09/2026 | | 101,764 | 0.03% | physical | - |
| Goldman Sachs International | Call/Put Option | 17/09/2026 | | 101,764 | 0.03% | physical | - |
| Goldman Sachs International | Call/Put Option | 18/09/2026 | | 101,764 | 0.03% | physical | - |
| Goldman Sachs International | Call/Put Option | 17/07/2026 | | 101,764 | 0.03% | physical | - |

| | | | | | | | |
|------------------------------|-----------------|------------|--|---------|-------|----------|---|
| Goldman Sachs International | Call/Put Option | 28/10/2026 | | 101,765 | 0.03% | physical | - |
| Goldman Sachs International | Call/Put Option | 29/10/2026 | | 101,765 | 0.03% | physical | - |
| Goldman Sachs International | Call/Put Option | 30/10/2026 | | 101,765 | 0.03% | physical | - |
| Goldman Sachs International | Call/Put Option | 02/11/2026 | | 101,765 | 0.03% | physical | - |
| Goldman Sachs International | Call/Put Option | 03/11/2026 | | 101,765 | 0.03% | physical | - |
| Goldman Sachs International | Call/Put Option | 04/11/2026 | | 101,765 | 0.03% | physical | - |
| Goldman Sachs International | Call/Put Option | 05/11/2026 | | 101,765 | 0.03% | physical | - |
| Goldman Sachs International | Call/Put Option | 06/11/2026 | | 101,765 | 0.03% | physical | - |
| Goldman Sachs International | Call/Put Option | 09/11/2026 | | 101,765 | 0.03% | physical | - |
| Goldman Sachs International | Call/Put Option | 10/11/2026 | | 101,765 | 0.03% | physical | - |
| Goldman Sachs International | Call/Put Option | 11/11/2026 | | 101,765 | 0.03% | physical | - |
| Goldman Sachs International | Call/Put Option | 12/11/2026 | | 101,765 | 0.03% | physical | - |
| Goldman Sachs International | Call/Put Option | 13/11/2026 | | 101,765 | 0.03% | physical | - |
| Goldman Sachs International | Call/Put Option | 16/11/2026 | | 101,765 | 0.03% | physical | - |
| Goldman Sachs International | Call/Put Option | 17/11/2026 | | 101,765 | 0.03% | physical | - |
| Goldman Sachs International | Call/Put Option | 18/11/2026 | | 101,765 | 0.03% | physical | - |
| Goldman Sachs International | Call/Put Option | 19/11/2026 | | 101,765 | 0.03% | physical | - |
| Goldman Sachs International | Call/Put Option | 20/11/2026 | | 101,765 | 0.03% | physical | - |
| Goldman Sachs International | Call/Put Option | 23/11/2026 | | 101,765 | 0.03% | physical | - |
| Goldman Sachs International | Call/Put Option | 24/11/2026 | | 101,765 | 0.03% | physical | - |
| Goldman Sachs International | Call/Put Option | 25/11/2026 | | 101,765 | 0.03% | physical | - |
| Goldman Sachs International | Call/Put Option | 26/11/2026 | | 101,765 | 0.03% | physical | - |
| Goldman Sachs International | Call/Put Option | 27/11/2026 | | 101,765 | 0.03% | physical | - |
| Goldman Sachs Bank Europe SE | Call Warrant | 31/12/2030 | | 7,801 | 0.00% | cash | - |
| Goldman Sachs Bank Europe SE | Call Warrant | 31/12/2030 | | 5,700 | 0.00% | cash | - |
| Goldman Sachs Bank Europe SE | Call Warrant | 31/12/2030 | | 13,000 | 0.00% | cash | - |
| Goldman Sachs Bank Europe SE | Call Warrant | 31/12/2030 | | 9,000 | 0.00% | cash | - |
| Goldman Sachs Bank Europe SE | Call Warrant | 31/12/2030 | | 30,000 | 0.01% | cash | - |
| Goldman Sachs Bank Europe SE | Call Warrant | 31/12/2030 | | 1,000 | 0.00% | cash | - |
| Goldman Sachs Bank Europe SE | Call Warrant | 31/12/2030 | | 1,000 | 0.00% | cash | - |
| Goldman Sachs Bank Europe SE | Call Warrant | 31/12/2030 | | 15,000 | 0.00% | cash | - |
| Goldman Sachs Bank Europe SE | Call Warrant | 31/12/2030 | | 1,806 | 0.00% | cash | - |
| Goldman Sachs Bank Europe SE | Call Warrant | 31/12/2030 | | 47,000 | 0.01% | cash | - |
| Goldman Sachs Bank Europe SE | Call Warrant | 31/12/2030 | | 8,000 | 0.00% | cash | - |
| Goldman Sachs Bank Europe SE | Call Warrant | 31/12/2030 | | 1,600 | 0.00% | cash | - |
| Goldman Sachs Bank Europe SE | Call Warrant | 31/12/2030 | | 1,000 | 0.00% | cash | - |
| Goldman Sachs Bank Europe SE | Call Warrant | 31/12/2030 | | 1,600 | 0.00% | cash | - |
| Goldman Sachs Bank Europe SE | Call Warrant | 31/12/2030 | | 900 | 0.00% | cash | - |
| Goldman Sachs Bank Europe SE | Call Warrant | 31/12/2030 | | 1,100 | 0.00% | cash | - |
| Goldman Sachs Bank Europe SE | Call Warrant | 31/12/2030 | | 6,000 | 0.00% | cash | - |
| Goldman Sachs Bank Europe SE | Call Warrant | 31/12/2030 | | 2,000 | 0.00% | cash | - |
| Goldman Sachs Bank Europe SE | Call Warrant | 31/12/2030 | | 2,000 | 0.00% | cash | - |
| Goldman Sachs International | Swap | 03/04/2035 | | 321,837 | 0.10% | cash | - |
| Goldman Sachs International | Swap | 09/05/2028 | | 268,288 | 0.08% | cash | - |
| Goldman Sachs International | Swap | 30/04/2035 | | 93,256 | 0.03% | cash | - |
| Goldman Sachs International | Swap | 20/12/2027 | | 79,771 | 0.02% | cash | - |
| Goldman Sachs International | Swap | 28/05/2035 | | 73,995 | 0.02% | cash | - |
| Goldman Sachs International | Swap | 20/11/2034 | | 66,209 | 0.02% | cash | - |
| Goldman Sachs International | Swap | 04/10/2027 | | 56,804 | 0.02% | cash | - |
| Goldman Sachs International | Swap | 07/03/2029 | | 56,497 | 0.02% | cash | - |
| Goldman Sachs International | Swap | 03/04/2035 | | 43,966 | 0.01% | cash | - |

| | | | | | | | |
|------------------------------|--------------------|------------|--|-------------------|--------------|----------|---|
| Goldman Sachs International | Swap | 03/04/2035 | | 35,871 | 0.01% | cash | - |
| Goldman Sachs International | Swap | 15/01/2030 | | 35,825 | 0.01% | cash | - |
| Goldman Sachs Bank Europe SE | Swap | 03/09/2025 | | 34,049 | 0.01% | cash | - |
| Goldman Sachs International | Swap | 03/04/2035 | | 32,249 | 0.01% | cash | - |
| Goldman Sachs International | Swap | 03/09/2025 | | 17,645 | 0.01% | cash | - |
| Goldman Sachs International | Swap | 29/06/2026 | | 10,425 | 0.00% | cash | - |
| Goldman Sachs International | Swap | 04/06/2035 | | 6,401 | 0.00% | cash | - |
| Goldman Sachs International | Swap | 04/06/2035 | | 5,631 | 0.00% | cash | - |
| Goldman Sachs International | Swap | 26/05/2028 | | 3,925 | 0.00% | cash | - |
| Goldman Sachs International | Swap | 22/05/2034 | | 2,530 | 0.00% | cash | - |
| Goldman Sachs International | Swap | 08/08/2025 | | 1,155 | 0.00% | cash | - |
| Goldman Sachs International | Swap | 05/06/2028 | | 1,054 | 0.00% | cash | - |
| Goldman Sachs International | Swap | 04/06/2035 | | 543 | 0.00% | cash | - |
| Goldman Sachs International | Swap | 04/06/2035 | | 498 | 0.00% | cash | - |
| Goldman Sachs International | Swap | 04/06/2035 | | 167 | 0.00% | cash | - |
| Goldman Sachs International | Swap | 04/09/2025 | | 73 | 0.00% | cash | - |
| Goldman Sachs International | Swap | 04/06/2035 | | 71 | 0.00% | cash | - |
| Goldman Sachs Bank Europe SE | Swap | 03/09/2025 | | 9 | 0.00% | cash | - |
| Goldman Sachs International | Securities Lending | Open | | 1,151,825 | 0.34% | physical | - |
| Goldman Sachs & Co. LLC | Securities Lending | Open | | 5,587 | 0.00% | physical | + |
| TOTAL | | | | 19,861,664 | 5.88% | | |

 The totals will be updated once you have clicked on <CALCULATE>

| TOTAL (A & B) | # of voting rights | % of voting rights |
|------------------|--------------------|--------------------|
| CALCULATE | 22,197,946 | 6.57% |

11) Full chain of controlled undertakings through which the holding is effectively held, if applicable

Please refer to Annexure - Structured Chart

12) In case of proxy voting for only one GM

Holder will cease to hold / will hold again 0 voting rights as of (DD/MM/YYYY)

13) Additional information

With reference to the items mentioned in Section 10B:
 - "Call/Put Option" mentioned in rows 67 to 236 – these are call/put options relating to the same shares and forming part of a single transaction. Goldman Sachs International has granted the put options and acquired the call options over 17,300,000 shares in Proximus SA.
 - "Call Warrants" and "Swaps" mentioned in rows 237 to 282- these are held by the corresponding entities where Goldman Sachs has a long exposure

Done at

On (DD/MM/YYYY)

Name & capacity

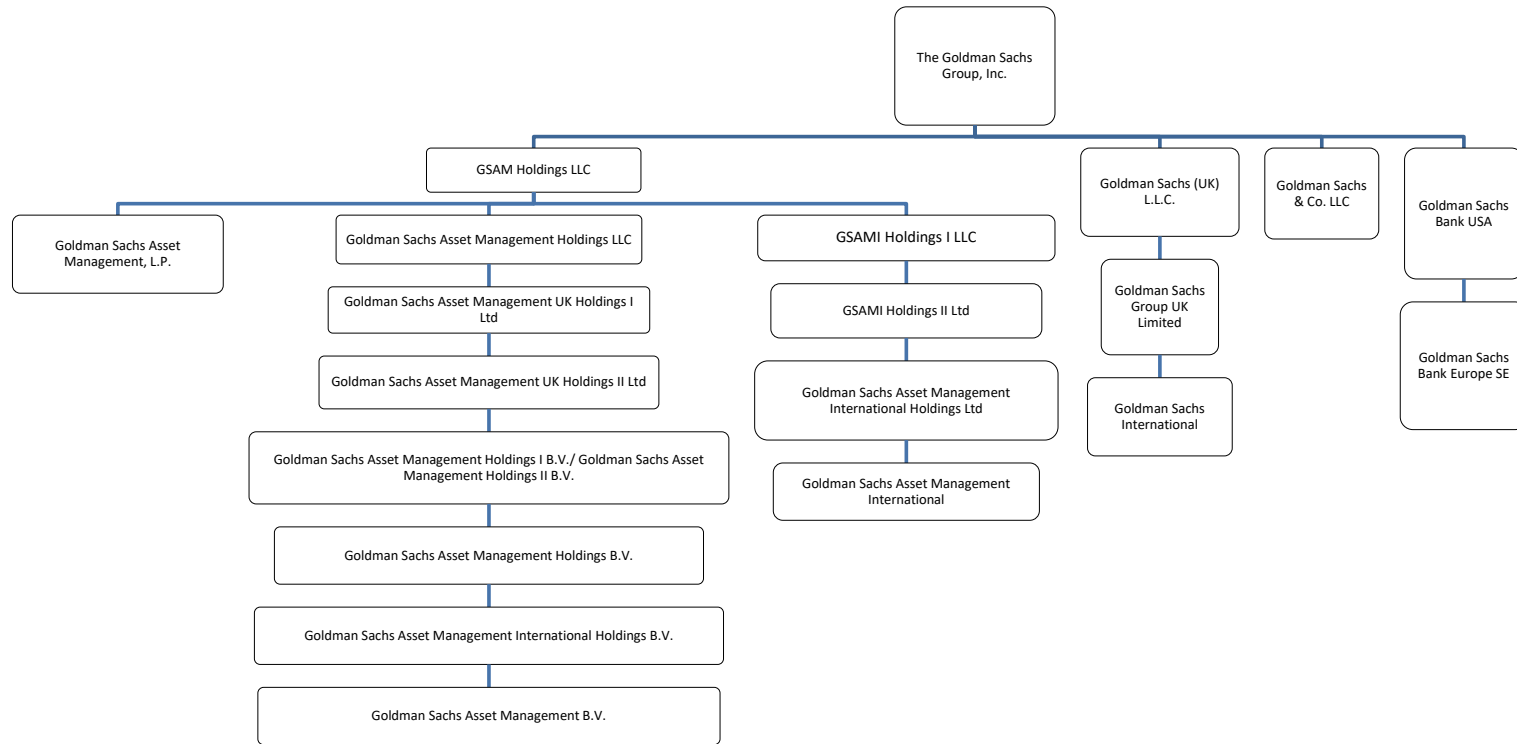
Signature

For security reasons, the unsigned form in [xlsx](#) format should be transmitted to trp.fin@fsma.be. You can do this manually OR if you have MS Outlook at your disposal via the "Save & Send" button.

In addition, a signed copy in [PDF](#) format should also be transmitted.

Chain of Controlled Undertakings:

- GOLDMAN SACHS INTERNATIONAL IS CONTROLLED BY GOLDMAN SACHS GROUP UK LIMITED WHICH IS CONTROLLED BY GOLDMAN SACHS (UK) L.L.C. WHICH IS CONTROLLED BY THE GOLDMAN SACHS GROUP, INC.
- GOLDMAN SACHS ASSET MANAGEMENT, L.P. IS CONTROLLED BY GSAM HOLDINGS LLC WHICH IS CONTROLLED BY THE GOLDMAN SACHS GROUP, INC.
- GOLDMAN SACHS ASSET MANAGEMENT INTERNATIONAL IS CONTROLLED BY GOLDMAN SACHS ASSET MANAGEMENT INTERNATIONAL HOLDINGS LTD WHICH IS CONTROLLED BY GSAMI HOLDINGS II LTD. WHICH IS CONTROLLED BY GSAMI HOLDINGS I LLC WHICH IS CONTROLLED BY GSAM HOLDINGS LLC WHICH IS CONTROLLED BY THE GOLDMAN SACHS GROUP, INC.
- GOLDMAN SACHS BANK EUROPE SE IS CONTROLLED BY GOLDMAN SACHS BANK USA WHICH IS CONTROLLED BY THE GOLDMAN SACHS GROUP, INC.
- GOLDMAN SACHS ASSET MANAGEMENT B.V. IS CONTROLLED BY GOLDMAN SACHS ASSET MANAGEMENT INTERNATIONAL HOLDINGS B.V. WHICH IS CONTROLLED BY GOLDMAN SACHS ASSET MANAGEMENT HOLDINGS B.V. WHICH IS CONTROLLED BY GOLDMAN SACHS ASSET MANAGEMENT HOLDINGS I B.V. / GOLDMAN SACHS ASSET MANAGEMENT HOLDINGS II B.V. WHICH IS CONTROLLED BY GOLDMAN SACHS ASSET MANAGEMENT UK HOLDINGS II LTD WHICH IS CONTROLLED BY GOLDMAN SACHS ASSET MANAGEMENT UK HOLDINGS I LTD WHICH IS CONTROLLED BY GOLDMAN SACHS ASSET MANAGEMENT HOLDINGS LLC WHICH IS CONTROLLED BY GSAM HOLDINGS LLC WHICH IS CONTROLLED BY THE GOLDMAN SACHS GROUP, INC.



Note: The above structure chart reflecting the chain of controlled undertakings is based on voting rights only. For the purpose of aggregation and representation, only entities that have more than 50% of the voting shares are regarded as a controlled undertaking under the substantial shareholder disclosure rules. The structure chart comprises only GS entities which are part of the notification.